

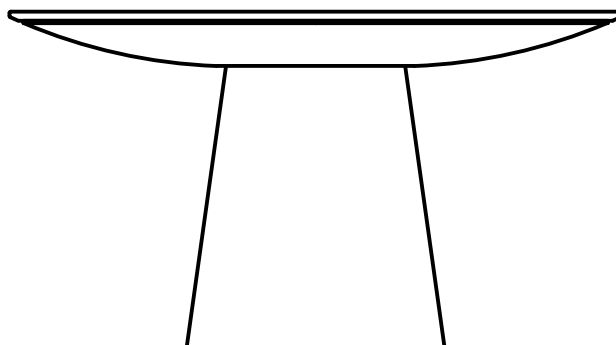
## UFO MARBLE



design by Ferruccio Laviani

## UFO MARBLE

design by Ferruccio Laviani



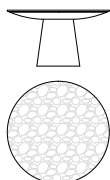
Tavoli con piano in marmo bisellato (sp. mm. 20) con finitura lucida. Il sottopiano è completamente realizzato in legno multistrato sagomato laccato; la base, invece, ha struttura interna in legno multistrato rivestito da un cono anch'esso in legno multistrato curvato laccato.  
È possibile avere predisposizione per il cablaggio.

Tables with top in marble with bevelled edge (thickness 20 mm.) with glossy finish. The underside is completely made of lacquered shaped multilayer wood; the base, instead, has the inner structure in multilayer wood covered with a cone in lacquered bent multilayer wood.  
It's possible to have wiring predisposition.

## Versione rotonda · Round version

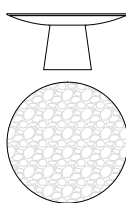
TM86

	Ø	H
cm	135	74
in	53	29



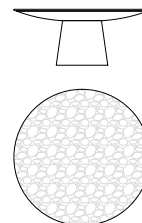
TM87

	Ø	H
cm	160	74
in	63	29



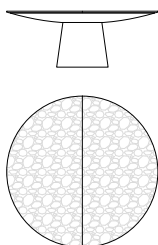
TM88

	Ø	H
cm	180	74
in	71	29



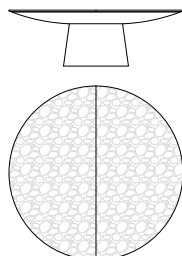
TM881

	Ø	H
cm	200	74
in	79	29



TM882

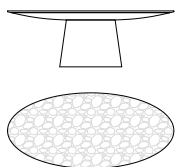
	Ø	H
cm	230	74
in	91	29



## Versione ovale · Oval version

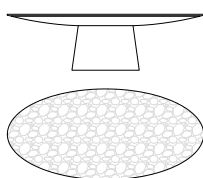
TM85

	W	D	H
cm	220	100	74
in	87	39	39



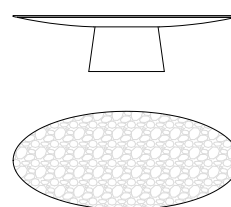
TM851

	W	D	H
cm	260	120	74
in	102	47	29



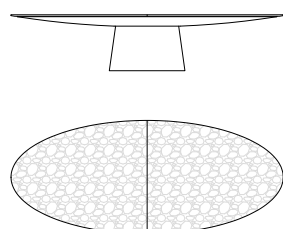
TM852

	W	D	H
cm	300	130	74
in	118	51	29



TM853

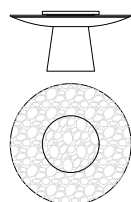
	W	D	H
cm	360	150	74
in	142	59	29



## Versione con Lazy Susan in appoggio sul piano · Version with Lazy Susan to be placed on the table top

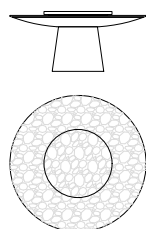
TM87

	Ø	H
cm	160	74
in	63	29



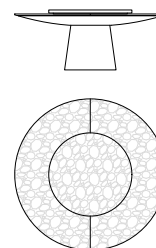
TM88

	Ø	H
cm	180	74
in	71	29



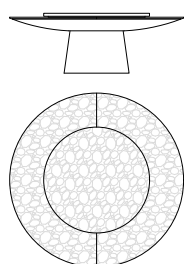
TM881

	Ø	H
cm	200	74
in	79	29



TM882

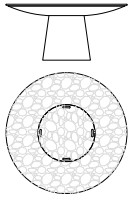
	Ø	H
cm	230	74
in	91	29



## Versione con Lazy Susan incassata · Version with embedded Lazy Susan

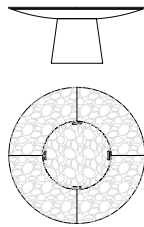
TGM87

	Diam.	H
cm	160	74
in	x53	29



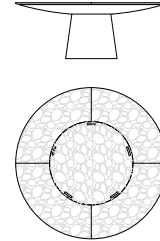
TGM88

	Diam.	H
cm	180	74
in	63	29



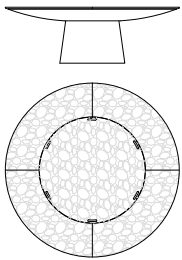
TGM881

	Diam.	H
cm	200	74
in	79	29



TGM882

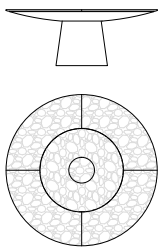
	Diam.	H
cm	230	74
in	91	29



## Versione con Lazy Susan ad anello motorizzato · Version with ring-shaped motorized Lazy Susan

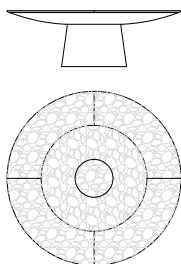
T1GM881

	Diam.	H
cm	200	74
in	79	29



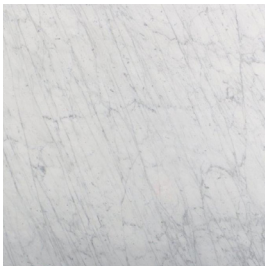
T1GM1882

	Diam.	H
cm	230	74
in	91	29



**FINITURE PER PIANO · FINISHES FOR THE TOP**

Marmi · Marble types



*Carrara Bianco*

White Carrara



*Emperador Marrone*

Dark Emperador



*Pietra Grey*

Stone Grey



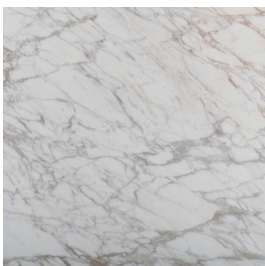
*Nero Marquina*

Black Marquina



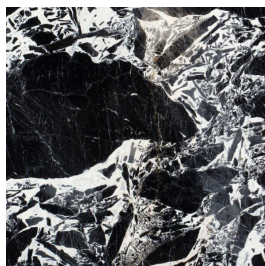
*Arabescato Orobico*

Arabescato Orobico



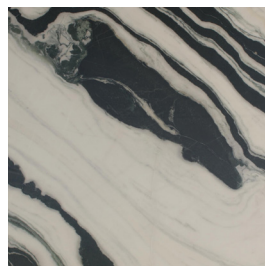
*Calacatta Oro*

Gold Calacatta



*Grand Noir Antique*

Grand Noir Antique



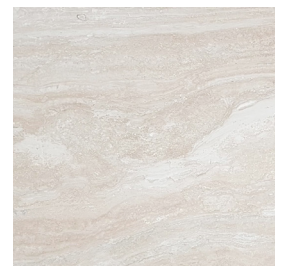
*Panda*

Panda



*Bronze Amani*

Bronze Amani

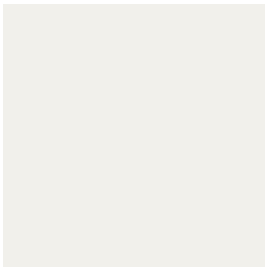


*Travertino Ostuni*

Ostuni Travertine

## FINITURE PER SOTTOPIANO E BASE · FINISHES FOR UNDERSIDE AND BASE

*Finitura opaca o lucida poliesteri · Mat or glossy polyester finish*



*Bianco Traffico*

Traffic White

RAL 9016



*Nero Intenso*

Jet Black

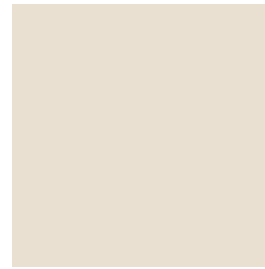
RAL 9005



*Grigio Pietra*

Stone Grey

RAL 7030



*Bianco Crema*

Cream

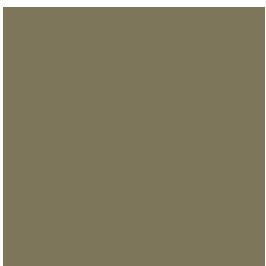
RAL 9001



*Marrone Nerastro*

Black Brown

RAL 8022



*Verde Canna*

Reed Green

RAL 6013



*Rosso Traffico*

Traffic Red

RAL 3020

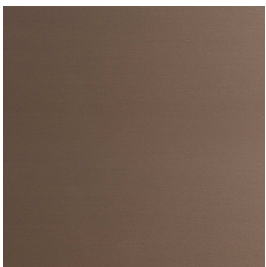


*Rosso Porpora*

Purple Red

RAL 3004

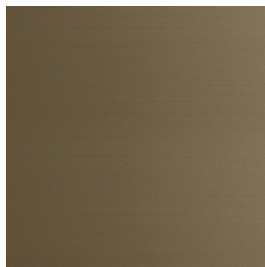
*Metallo liquido · Liquid metal*



*Bronzo*

Bronze

Cod. MLB



*Ottone*

Brass

Cod. MLO



*Stagno*

Tin

Cod. MLS

## CURA E MANUTENZIONE DEL LEGNO

*I legni utilizzati per i nostri prodotti sono di altissima qualità e lavorati con la massima maestria.*

*Le possibili differenze di tonalità o sfumature di colore sono da considerarsi caratteristiche naturali dei materiali e dimostrazione dell'artigianalità di lavorazione.*

*Per la pulizia quotidiana dei legni naturali, tinti e laccati, si consiglia di utilizzare un panno morbido o in microfibra, inumidito con acqua.*

*Non utilizzare prodotti spray, cere e prodotti che contengano alcool, solventi o abrasivi.*

*Pulire le macchie quando sono ancora fresche.*

*Tutti i prodotti sono realizzati nel rispetto dell'uomo e dell'ambiente.*

## CURA E MANUTENZIONE DEL MARMO

*I marmi utilizzati per i nostri prodotti sono di altissima qualità.*

*Le possibili differenze di tonalità, sfumature di colore e di venatura, anche all'interno della stessa lastra, sono da considerarsi caratteristiche naturali dei materiali.*

*Per la pulizia quotidiana dei marmi, si consiglia di utilizzare un panno morbido o in microfibra, inumidito con acqua o con detergenti neutri specifici.*

*Non utilizzare altri detergenti, sgrassatori o anticalcare, che potrebbero graffiare e danneggiare le superfici.*

*Pulire le macchie quando sono ancora fresche.*

*Tutti i prodotti sono realizzati nel rispetto dell'uomo e dell'ambiente.*

## CARE AND MAINTENANCE OF WOOD

The wood used for our products are of the highest quality and manufactured with the greatest craftsmanship.

Possible differences in colour tonality or shades are due to the natural characteristics of the materials and are to be considered as proof of artisanal workmanship.

For routine cleaning of natural, stained or lacquered wood, we suggest to use a soft or a microfiber cloth, dampened with water.

Never use spray products, wax or any product containing alcohol, solvent or abrasive.

Clean stains while they are still fresh.

All products are made with respect for the mankind and the environment.

## CARE AND MAINTENANCE OF MARBLE

The marble types used for our products are of the highest quality.

Possible differences in colour tonality, shades or grain, even in the same slab, are due to the natural characteristics of the materials.

For routine cleaning of marble, we suggest to use a soft or a microfiber cloth, dampened with water or with neutral specific cleansers.

Never use other cleansers, degreasers or anti-limescale, which can scratch or damage the surfaces.

Clean stains while they are still fresh.

All products are made with respect for the mankind and the environment.